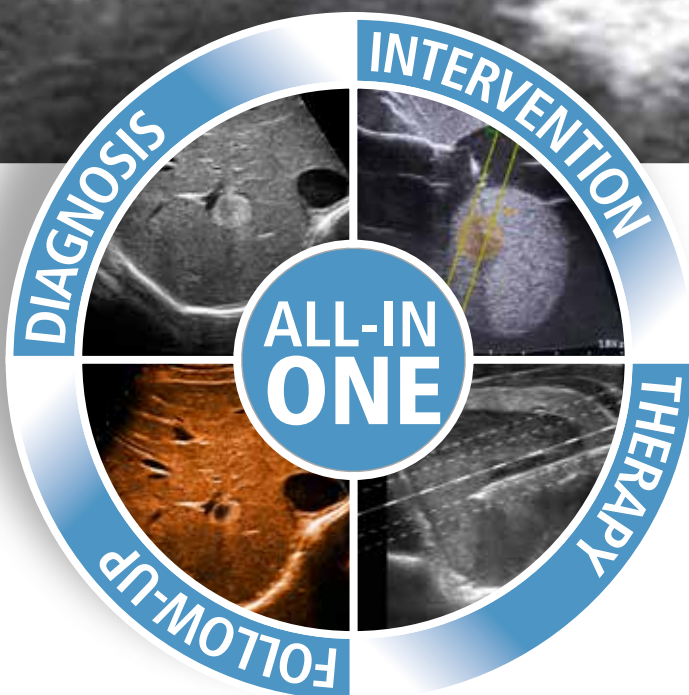


The new approach to minimally invasive techniques



The first and unique integrated system dedicated to diagnostic and interventional ultrasound as well as to thermal ablation therapy

EchoLaser MyLabTwice/Class C - Product Upgrade

Diagnosis and follow-up

A Premium Multi-disciplinary ultrasound system with an impressive image quality.

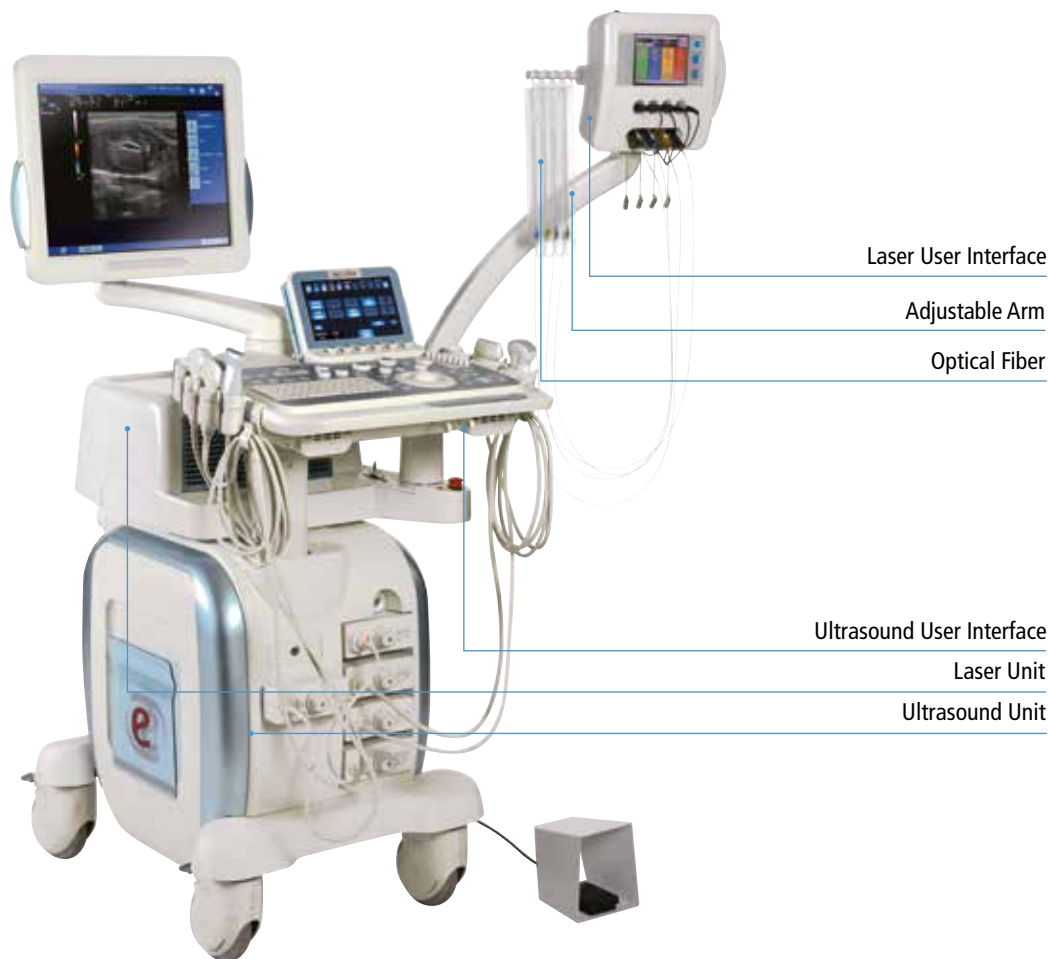
- **New image quality standard** for any operating mode and for a wide range of applications, from standard abdomen, small part, endocavity to advanced cardiology and vascular ones.
- **High Frequency Transducers** exhibiting very wide bandwidth (up to 18 MHz) that delivers detailed and accurate imaging in superficial tissues.
- **Tissue Characterization** application packages include Tissue Elasticity algorithm (**ElaXto**, opt) and Contrast Technology Imaging (**CnTI**, opt).

Interventional capability

- **Virtual Biopsy** to monitor percutaneous needle biopsy procedures using a dedicated needle fitted with a sensor that shows needle path overlaid on the real-time ultrasound image.
- **Fusion Imaging** with Virtual Navigator. A revolutionary technology able to combine the advantages of real-time ultrasound imaging the high spatial and contrast resolution of CT/MR.
- Virtual Navigator is fully integrated in the systems, enabling the user to easily switch between Fusion Imaging and the standard environment.

Therapeutic capability

- **Solid-state laser** technology for laser ablation of benign thyroid nodules and liver lesions.
- **A multi-fibre approach** allows to adapt treatments to lesion's shape and position.
- **Minimally traumatic fine needles** that are extremely well tolerated by patients.
- Precise positioning according to viable cells and organ's critical areas for a **greater control over coagulative necrosis' shape**.
- **Real-time Ultrasound monitoring** of laser treatment.



Laser User Interface

Adjustable Arm

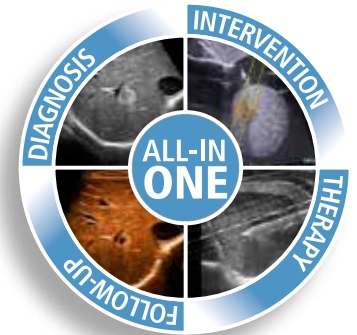
Optical Fiber

Ultrasound User Interface

Laser Unit

Ultrasound Unit

ECHO LASER



Mechanical Integration:

for a harmonized integration of the two devices. The powerful yet extremely compact size of the laser unit firmly fits into the newly designed planes of the US unit.

Functional Integration:

for data transfer (procedure's data, Laser status and configuration) between the two devices due to wireless technology. The Laser unit also transmits the treatment's technical data (fibers power setting, partial and total delivered energy and emission time) to a wireless printer (one of Laser Unit's accessories).

Ergonomic Integration:

for a flexible and ergonomic positioning of Laser Unit's console. Laser's Arm can be adjusted according to the organ to be treated and to the operator/patient's position. Fiber holder additionally allows sterile fiber blister's placement.

EchoLaser is a product of



joint venture



Esaoite S.p.A.



El.En. S.p.A.



Esaoite S.p.A. International Activities: Via di Caciolle 15 - 50127 Florence, Italy Tel. +39 055 4229 1 - Fax +39 055 4229 208 international.sales@esaote.com - www.esaote.com

Technology and features are system/configuration dependent. Specifications subject to change without notice. Information might refer to products or modalities not yet approved in all countries. For further details, please contact your Esaote sales representative.